



763

% " \$- fl&t

&\$%\$



&\$%\$



&\$%\$

&\$%\$

&\$% %

&\$%\$

7GF

(&&

7GF

7GF

7GF

7GF

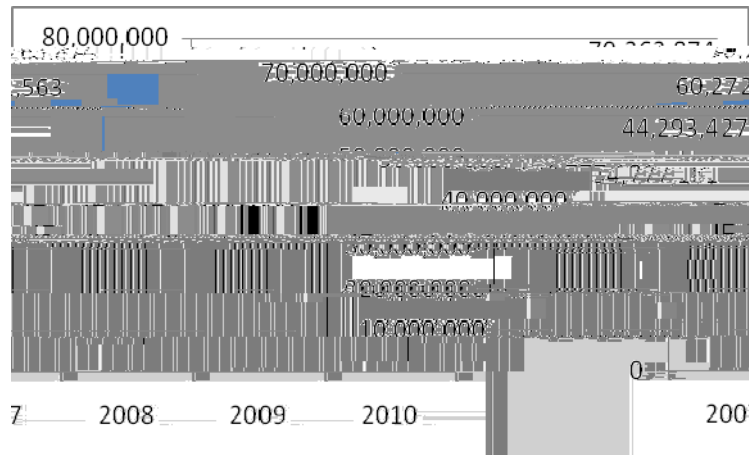
ZTE Corporation

55

1985 2 7

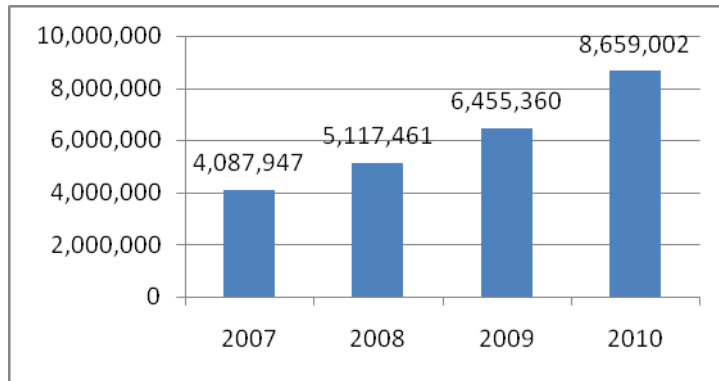
**2010** 70,263,874

**2010** 3,250,247



**1 2007-2010**

**2010 8,659,002**



**3 2007-2010**

&\$%

' \*

&\$%

) \$!

&\$%







2010

2007




7GF 7GF



43,285,429		1,867,869,027	10	3
	5.60		10	5
955,577,228	,	2,866,731,684	A	2,342,077,146
H	524,654,538			
		7		



x

TL9000

6SIGMA

GCSC



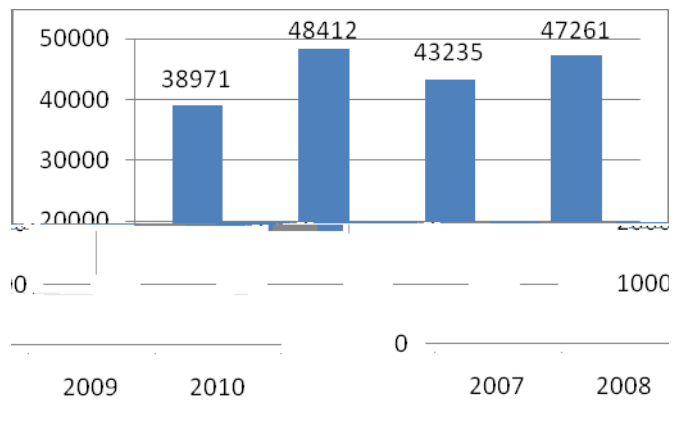


2003 7

4 14  
7 28  
5 80 420

2010 4.73

1.04 3.69 2010 2.34  
4 1.37 1



11

12

2009~2010

28027

958

Javeriana

IT TELKOM ITT) NPTIC

Inatel

IT TELKOM ITT) 2006

2000

6

15

OJT EDP SMART TALK

3000

600

2010

85,232

29

71

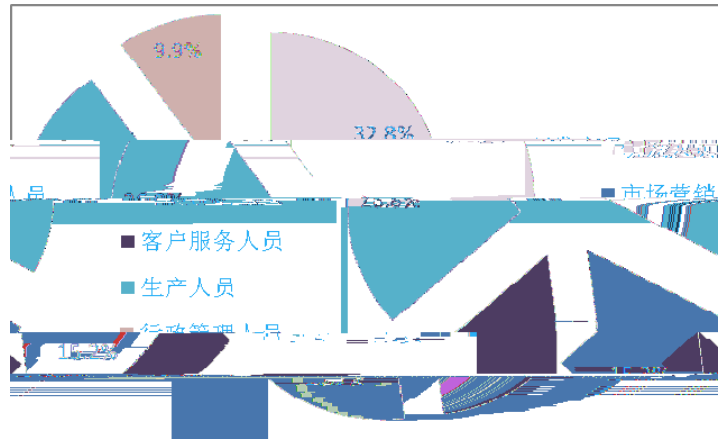
100%

2293

100

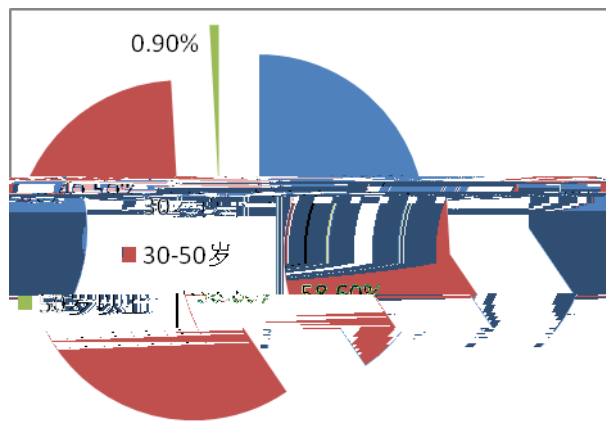
2010

65%

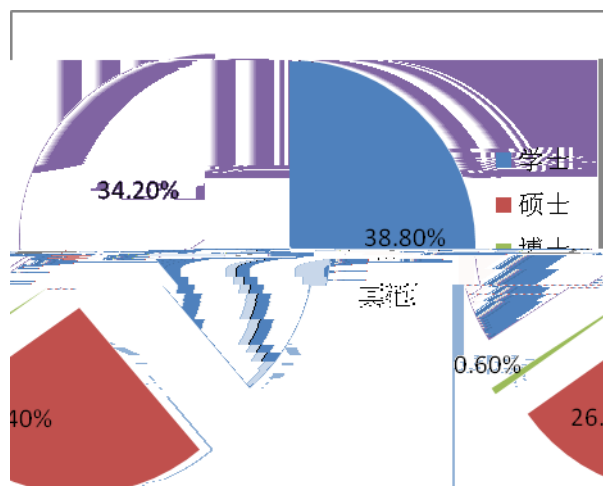


12:

29



13



14

&\$\$+ '

%

&\$\$+

(\$&&

%

\* \$i

&\$%\$

%&

' %

15



&)'! '\$i

%\$ \$i



/

2009

-- ZTE

&\$%

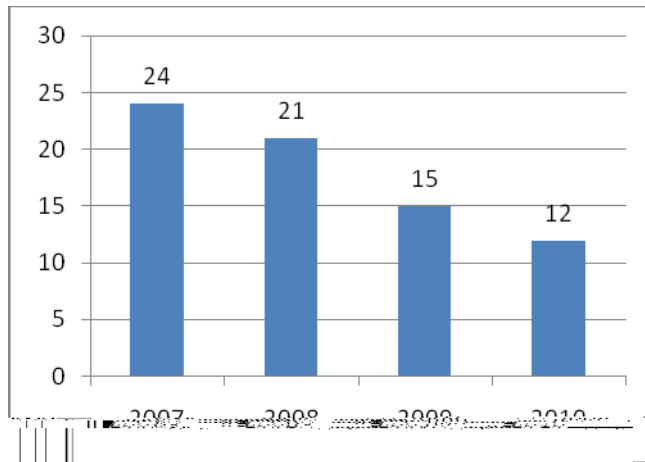
9

&\$%

' (' ++

%,

%&



16

2011

OH&S



C/G









2010 105.93

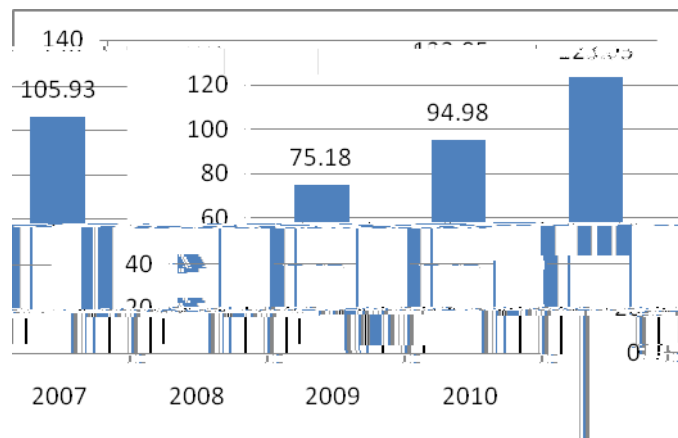
2010

2010

21

2007-2010

#	\$\$\$+	\$\$\$,	\$\$\$-	\$\$\$%
	+) "%	-( " -,	%&' " \$)	%) " - '



&&

\$\$\$+ \$\$\$

93.36%

22

2007

2010

8%

2010

15335.52

1166.92

7.61%

#	&\$\$+	&\$\$,	&\$\$-	&\$\$%
	, *-, " ('	%&+ "\$") %	% + (" &%	% ' ' " ) &
	' * - "\$)	(, (" ' +	- ' &' (+	%& " " - &
1%	' * + " - (	(, &" - &	- & " * +	%& ' " ( &
	(" &(1	' " + 1	) " - &	+ " * %

\*1: 0.997

2010

24 2010

%	&\$\$% 6'	% 1 ž *%+\$ &\$\$% ' +&\$\$ ' * - \$, " - (
&	&\$\$% &\$ \$\$ , \$\$ %&	\$", ) &%) * \$* - \$ * \$) \$+ " - '
'	&\$\$% ' %\$\$	%\$ \$", , ' , (\$\$ ( * \$, \$\$ ( ) - (%&" *
(	&\$\$% &(- ,	%\$ &\$\$%) + &\$\$" - +
)	&\$\$% %& %+\$, \$?V5ž	%)" ( % (" , (
*	&\$\$% )\$\$\$\$	% , \$\$ &) & &) % &(

+





52191

[2008]52191

&+

%			86( (#&*! &\$\$%
&		!!!!	86( (#&+! &\$\$%
'		*\$ )\$	; 6%& (, ! - \$
(			!!!!

	&\$\$,	&\$\$-	&\$\$%				
#	a[# ȷ	fL[#\ȷ	a[# ȷ	fL[#\ȷ	a[# ȷ	fL[#\ȷ	fa[# ȷ



2010

10

2011

4

11

SDR

60%

LTE/4G

---

DPD+Doherty

ET

D-PT

” ”

PCB

80%

SDR

SDR

900

1800

GSM

UMTS

Software Define

GSM

UMTS,HSPA,

LTE

4G

100%

---

50%

NGN

xPON

PON

PON

2008 10

2009 6

10G-EPON

10G EPON

EPON

Coc

50.2286 T0 TD0.0006 Tc.0015 Tcc4b30401181371 Tf5.249c3 T0 TD62cd5D[42.2bc84d00c07ce045a>Tj/TTa

TCO

IP

PTN



SDR

4R+1D

' &

FYXI W		ZH9
FYI gY		
FYWyWY		
FYWj Yf		
8Y[fUXUV Y	5`! =D G8F \$"	



2008

2008 8

CSR

2010

CSR

CSR

CSR

CSR

CSR

CSR

CSR

CSR

CSR

CSR

CSR

CSR

CSR

CSR

CSR

CSR

CSR

CSR

CSR

2010

CSR

CSR

CSR

CSR

CSR

CSR

CSR

CSR

2010

422

640

CSR

CSR

CSR

CSR

CSR

CSR

EAP

85

33 2010

CSR

		&+	) *
		* +	%%
		' )	),
		) -	%&
7GF		),	%\$-
		( &	)'
		% (	% ,
		( &&	* (\$

¢

CSR

CSR

	CSR		CSR
2008	100		34
CSR	28	CSR	92
96%			
2009		500	
53	CSR		
2010			

' ( 7GF

%	7GF 7GF	
&	7GF	7GF
'		

2010 4 14 7 49 40 ( 33.1 96.7)

7.1 33

30

100

8 143

' (

) (

&\$\$

&)

(+) (

&\$\$\$

(\$

&&

,

&

&\$\$\$

2010 1 12 16 53 7.3 200  
1 14



2010

1. 2010 1
2. 2010 2 “ 3G ”  
“ - ”
3. 2010 3 2009-2010  
2009-2010
4. 2010 4 2009
5. 2010 5 SDR
6. 2010 6 2 2
7. 2010 6 2010
8. 2010 6 2009
9. 2010 8 2009
10. 2010 9 2009-2010
11. 2010 9
12. 2010 9
13. 2010 9 Frost & Sullivan 2010 IPTV
14. 2010 10
15. 2010 10 2010 ZXA10 C300 2010
16. 2010 10 2010

17. 2010 11

IT

18. 2010 12

19. 2010 12

2010

20. 2010 12

21. 2010 12

2010

22. 2010 12

&\$% ' %+